

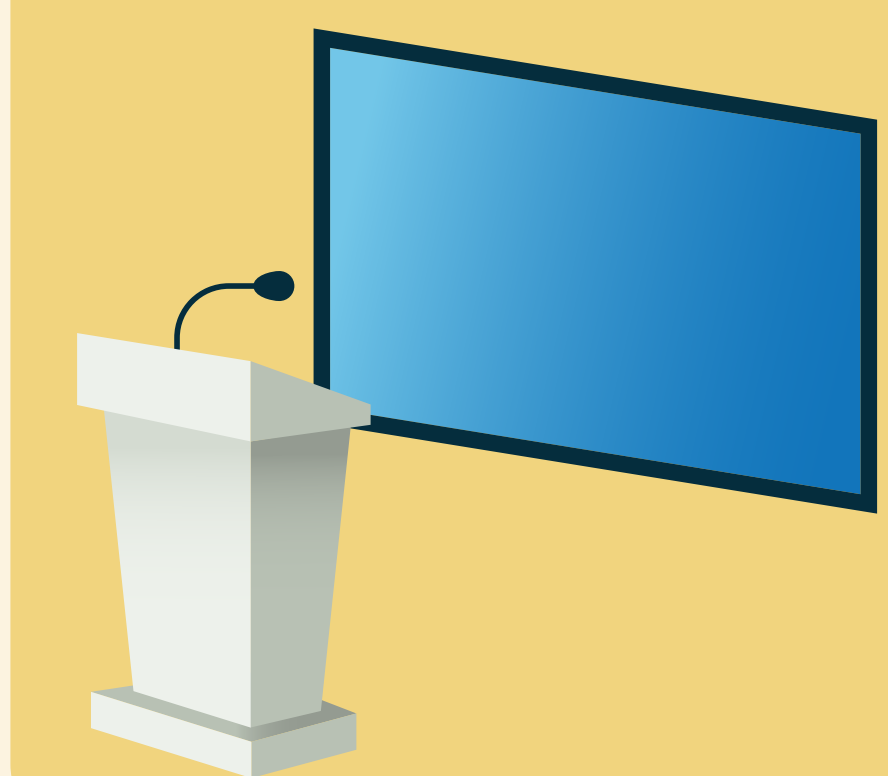
LIBRARY *by the* NUMBERS

2,606,133

Library Visitors



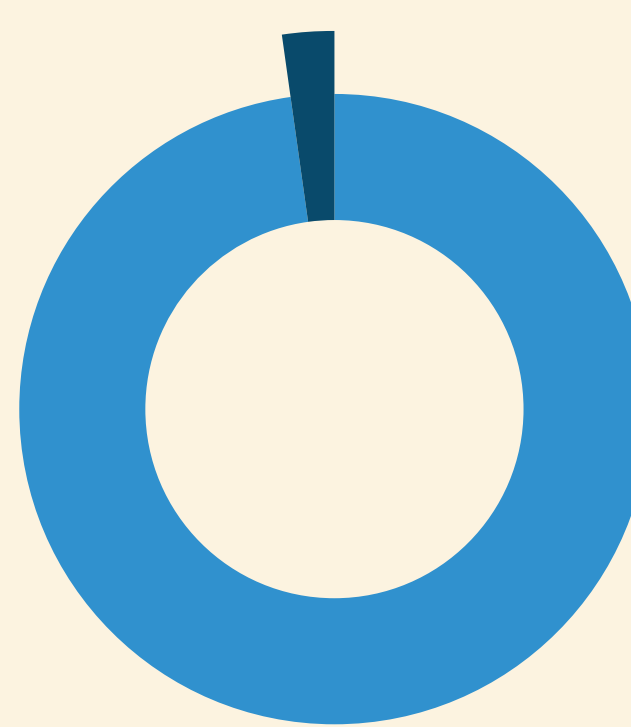
Programs



26,061

Programs

12,364
Virtual



527,898
In-Person

540,262

Program Attendance

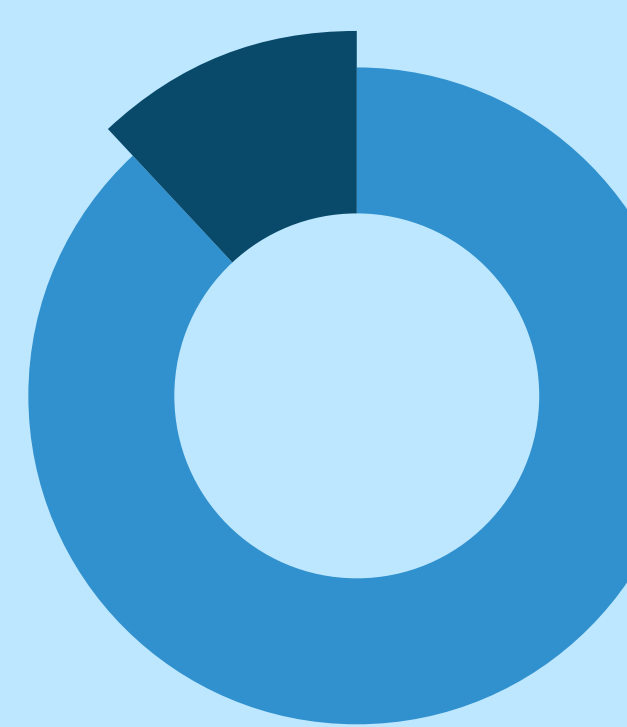
Job Help



2,342

Programs

807
Virtual



5,889
In-Person

6,696

Program Attendance

2025

July 1, 2024 to
June 30, 2025

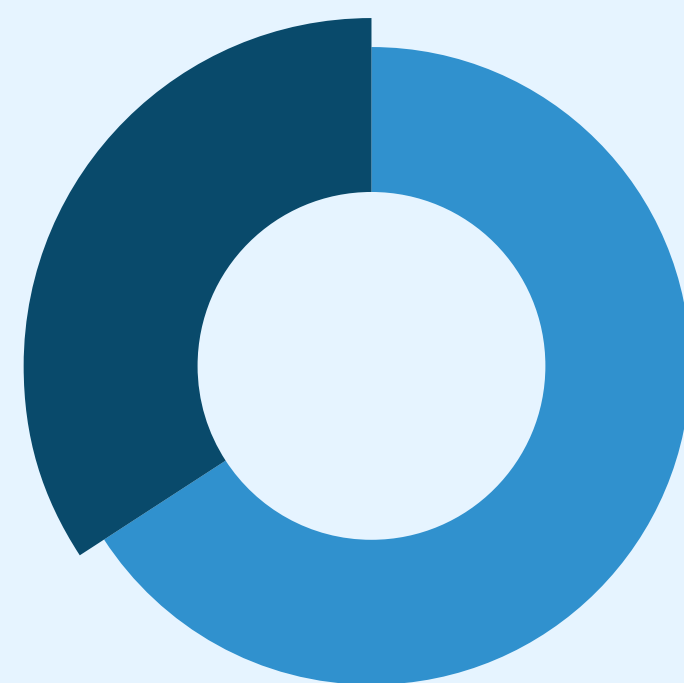
Charlotte Mecklenburg Library

Materials Borrowed



4,898,734

Digital Circulation

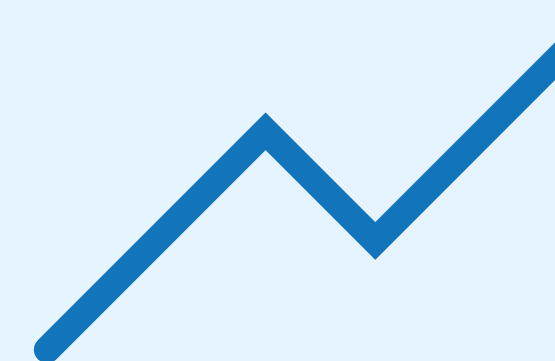


9,421,237

Total Circulation

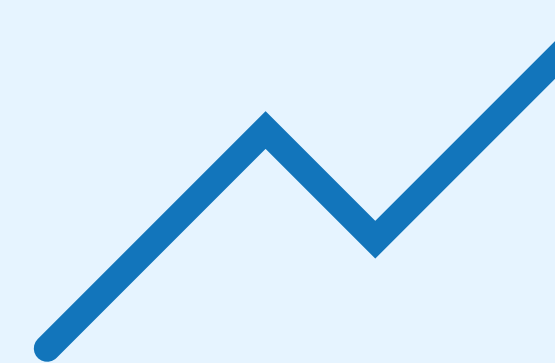
23.4%

Growth in
Digital Circulation*



8.6%

Growth in Circulation*



MoLi and MiLa



22,278

MoLi Circulation

398

MoLi Programs
Delivered

4,720

Moli Program
Attendance

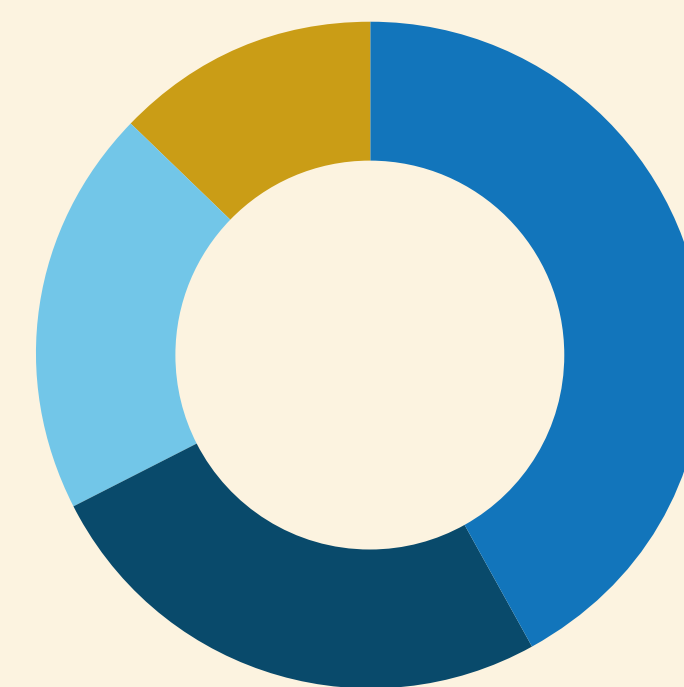
249

MiLa** Customers

7

MiLa** Visits
from May to June

Social Media



22,788

Facebook

13,854

Instagram

6,876

LinkedIn

10,695

X

Pre-Third Grade Literary Impact

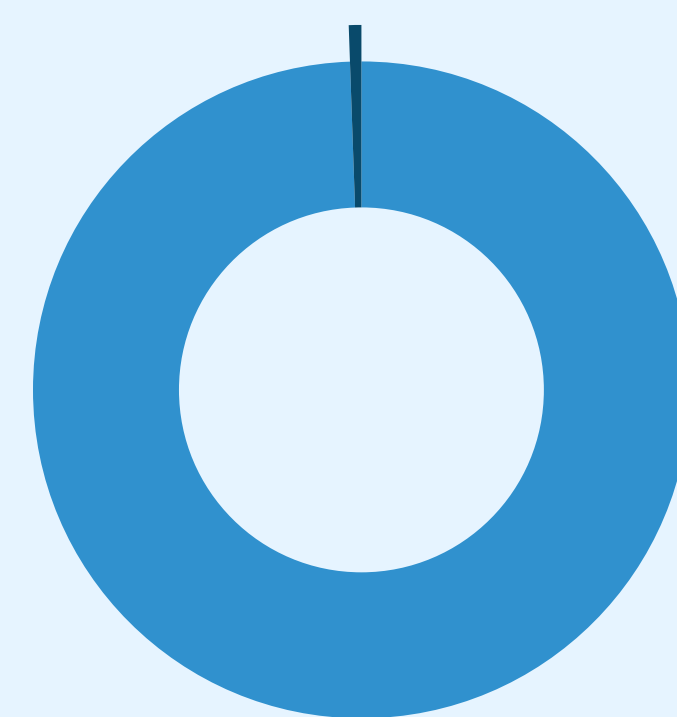


407,079

Program Attendance

3,268

Virtual



403,811

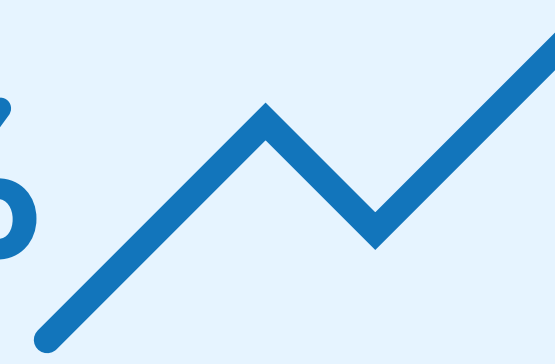
In-Person

14,564

Programs

38.69%

Growth in
Literacy Programming*



Library Cardholders



346,661

Active Cardholders

4.5%

Growth in
Active Cardholders*



SUMMER READING

325,191

Days Logged

8,026

Active Readers

1,786

Challenge Completions

11,301

Accounts Registered

27,482

Badges Earned

one access

52.4%

ONE Access*** Students
who used their account during
the 24-25 school year

*** ONE Access, or "One Number
Equals Access," allows students in
local colleges, charter and private
schools, home schools, and Charlotte
Mecklenburg Schools to have access
to Library resources with their school
identification numbers instead of
separate Library cards.

** MiLa is a state-of-the-art mobile
internet lab that brings the power
of technology and learning directly
to the community. It serves as a
mobile computer lab, classroom,
and Wi-Fi hotspot, offering access
to digital resources outside Library
walls. With the development of
new community partnerships, it
began site visits in May 2025.

* Growth is recorded
from FY 2024 to
FY 2025



CHARLOTTE MECKLENBURG

LIBRARY